

## TESCA LIFTING CONVEYOR

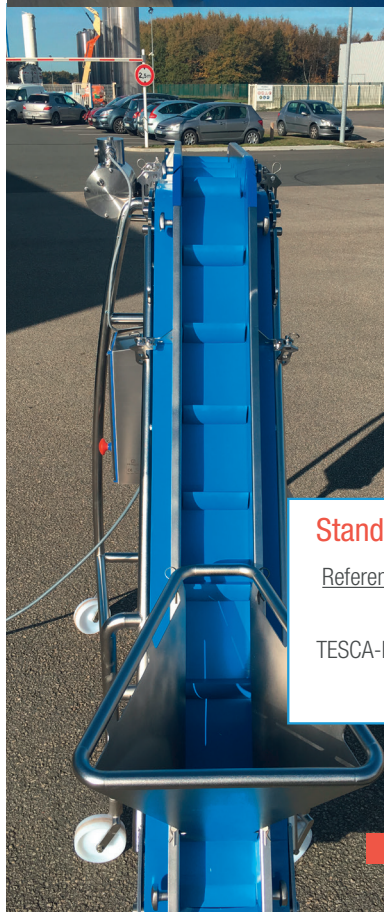
### The very first agro-food hygienic lifting conveyor belt with retractable cleats

Based on an analysis of the loose product conveying market, IMMEQUIP is focusing on innovations in the adhesive product handling sector.

IMMEQUIP has decided to fit the revolutionary “retractable cleat” solid belt on the successful BELTFLEX lifting conveyor concept, patented in 2010.

In partnership with MAFDEL, the positive drive PU belt shall be modified to feature retractable cleats. The cleats retract upon return of the belt, thus allowing for continuous scraping.

According to the latest recommendations from the EHEDG, the C-shaped frame features an electro-polished finish and is fitted with retractable hinged edges.



No Bolts  
No hollow parts!!!

#### Standard dimensions

Reference	Belt Width (mm)	Flights		Capacity depending on product	Power - Speed
	Total - Effective width	Height	Spacing (mm)		
TESCA-H 140	270 - 140	40 - 190		1800 litres/h max.	0.37 kW - 20.0 m/min.

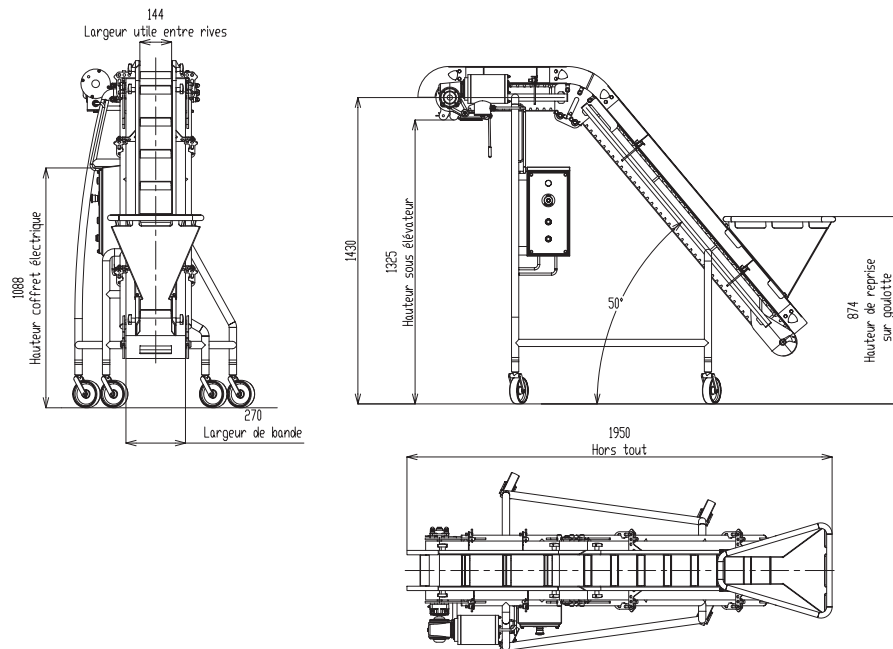
As part of our ongoing policy for product development, design and equipment specifications described above may be subject to change without notice.

**CONTACT OUR SALES DEPARTMENT ON +33 (0)2 51 41 18 08**

Fax number: +33 (0)2 51 41 16 17 - [contact@immequip.fr](mailto:contact@immequip.fr) - [www.immequip.com](http://www.immequip.com)  
IMMEQUIP engineering - ZI St Denis Les Lucs - 85170 ST DENIS LA CHEVASSE - FRANCE

## TECHNICAL CHARACTERISTICS OF THE TESCA MODEL

- Ø 32 mm, 304 l stainless steel tubular frame on industrial castors
- C-shaped construction for easy disassembly of the belt
- Lifting height adjustable from 1400 to 2800 mm
- PU homogeneous positive belt
  - High-frequency welded with retractable cleats
  - Height = 40 mm
  - Width = 140mm
  - Spacing = 190mm
- Continuous cleaning with flexible PU scraper
- Stainless steel retractable boards H=100 mm
- PEHD sprocket drive
- Hygienic motor entirely made of stainless steel P-products: 0.37 kW three-phase 400 Volts
- Max. speed: 20 m/min
- Hygienic design control unit
- High standards of hygiene, belt 1935-2004 and FDA approved
- Quick disassembly in less than 5 minutes, no tools required.



PROTECTED BY PATENT N° 13/50217

CONTACT OUR SALES DEPARTMENT ON +33 (0)2 51 41 18 08

Fax number: +33 (0)2 51 41 16 17 - [contact@immequip.fr](mailto:contact@immequip.fr) - [www.immequip.com](http://www.immequip.com)

IMMEQUIP engineering - ZI St Denis Les Lucs - 85170 ST DENIS LA CHEVASSE - FRANCE

