

DRYER ECD800 3-6 Modules

For continuous drying of extruded cereals...

- Drying by recirculation of hot air
- Possibility of DRYING and/or COOLING configuration.
- Modular construction equipment, in-line integration on extrusion process

The ECD800 Dryer is configured with 3 and up to 6 heating modules.

Each module has an **electrical power of 9 to 15KW** depending on the product and the quantity of water to be extracted.

One plate heat exchanger per module can recover up to 20% of the energy.

An 800mm wide stainless steel openwork belt transports the product with an adjustable residence time **from 3 to 12 minutes**.

Large **secure hinged doors** provide full access to the heating module and belt for cleaning.

A **remote control cabinet**, equipped with a **touch screen**, allows the various modules to be **automatically controlled** during the drying and/or cooling process.

Designed entirely in **stainless steel**, it will be integrated on your cereal extrusion lines...



Modele ECD800-5M
+ vertical Elevator EW-H450

Standard dimensions

Reference	Band width	Dimensions hors tout en mm	Number of module	Electrical Power.
ECD800-3M	800 mm	L 6200 x l. 1870 x h. 2982	3	From 32 to 50 kW/400 V
ECD800-4M	800mm	L 7540 x l. 1870 x h. 2982	4	42 / 66 kW/400 V
ECD800-5M	800mm	L 8800 x l. 1870 x h. 2982	5	52 / 82 kW/400 V
ECD800-6M	800mm	L 10200 x l. 1870 x h. 2982	6	62 / 100 kW/400 V

As part of our ongoing policy of product development, the design and material specifications described above may be subject to change without prior notice.



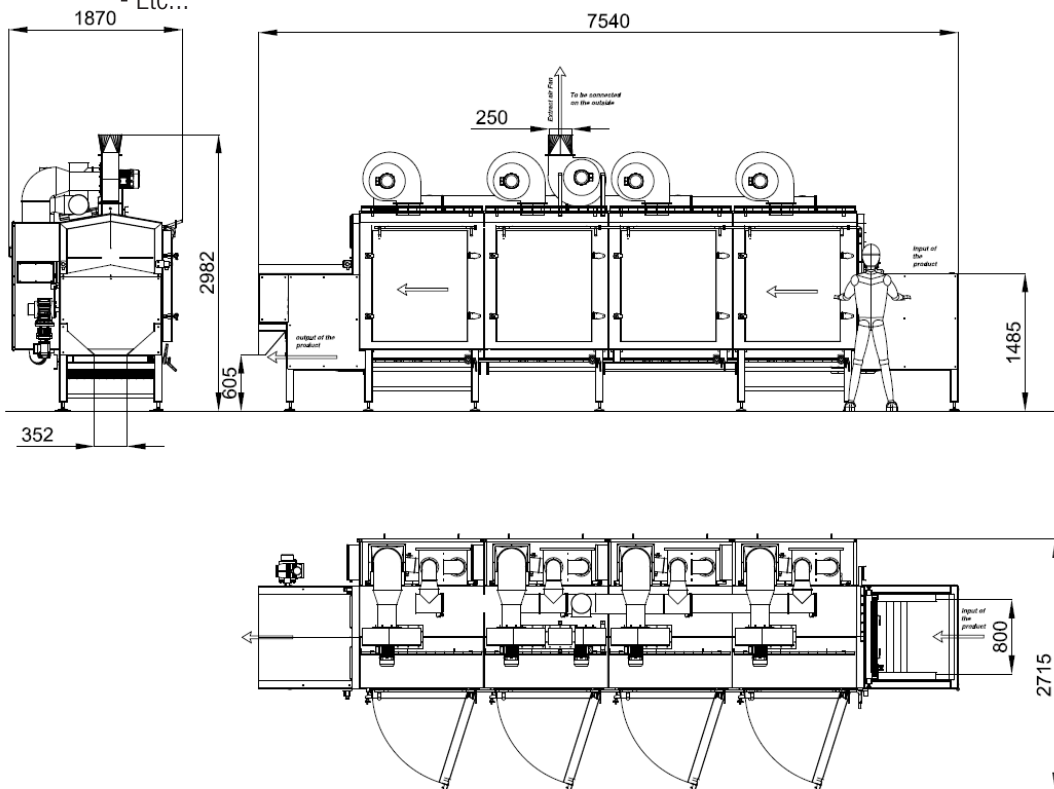
CONTACT OUR SALES DEPARTMENT AT +33 (0)2 51 41 18 08

Email- contact@immequip.fr - www.immequip.com

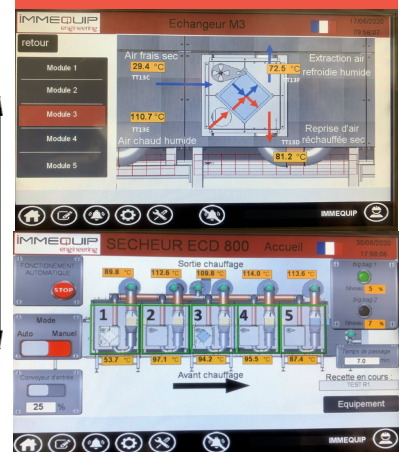
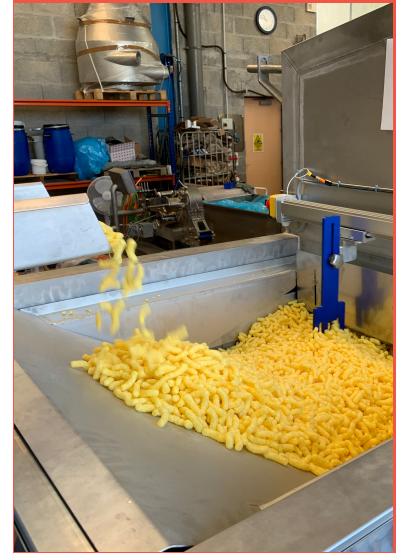
IMMEQ engineering - ZI St Denis Les Lucs - 85170 ST DENIS LA CHEVASSE - FRANCE

TECHNICAL DATA ECD800-5M

- 1 Input module 800mm wide equipped with a pneumatic distribution comb.
- 5 modular, insulated side-by-side boxes equipped for each :
 - 1 electric battery from 9 to 15KW tri 400Volts
 - 1 500m³/h plate heat exchanger for energy recovery
 - 1 fan P=1.1KW for air recirculation through the product.
- Extraction of the waste air by:
 - 1 fan P=1.1KW
 - 1 outlet pipe Ø250 to be connected to the outside.
- 1 Output module equipped with :
 - 1 SEW geared motor Wheel and screw P= 0.37KW
 - 1 outlet duct Height 600mm
- Product feed by all stainless steel metal belt
 - Hinged chain and perforated plates Ø2mm.
 - Steel side chains with 3" pitch
 - Stainless steel edges on each side height 60mm.
- Automated control cabinet comprising :
 - 1 touch panel with management of drying recipes
 - Residence time adjustable from 3 to 12 minutes
 - Adjustable temperature per zone from 10 to 140°C
 - Circulator speed adjustable from 10 to 100%.
 - Temperature display per zone IO-Link version
 - Etc...



Layout of the model ECD800-4M



CONTINUOUS CEREAL DRYING

CONTACT OUR SALES DEPARTMENT AT +33 (0)2 51 41 18 08

Email- contact@immequip.fr - www.immequip.com

IMMEQUIP engineering - ZI St Denis Les Lucs - 85170 ST DENIS LA CHEVASSE - FRANCE

